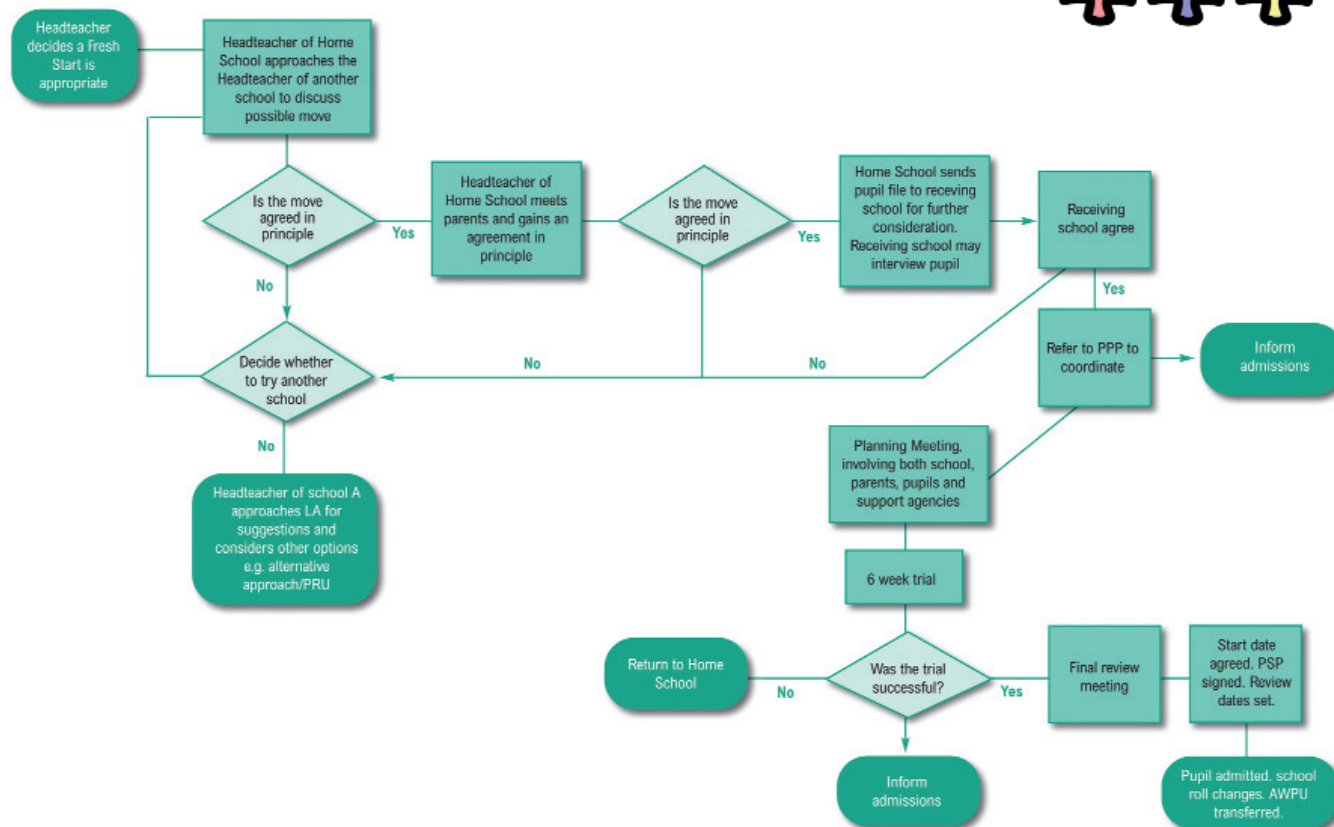


The Fresh Start Process Flowchart



Pupil Placement Panel Fresh Start Agreement

Info for Parents/Carers



Useful Contacts

West Berkshire Council Exclusions Officer:
01635 503409

West Berkshire Council School Admissions:
01635 519772

West Berkshire Council Website:
www.westberks.gov.uk

Education Welfare:
01635 519797

If you require this information in a different format, such as audio tape, or in an other language, please ask an English speaker to contact the team on 01635 42400.
WBC/PPP/AC/1213



Helping to find school places for pupils who are hard to place or hard to keep in school

The agreement does not replace the existing West Berkshire admissions process.

Parents or carers would usually contact West Berkshire Admissions when seeking another school place for their child.

What is a Fresh Start Agreement?

A Fresh Start Agreement is a supportive 6 week trial period at another school for pupils who are at risk of exclusion, with the opportunity for a permanent move of school if the trial is successful.

This Fresh Start agreement is part of the Fair Access Protocol which is required by the School Admission Code 2012. A Fresh Start can be a reasonable strategy to promote the reduction in numbers of pupils being excluded from mainstream schools. This should be seen as a piece of preventative work to support pupils at risk of exclusion.

Where a pupil presents challenging behaviour which places him or her at risk of being permanently excluded from school, a Fresh Start may enable them to move from one school to another on a temporary basis to seek a fresh start.

- If the challenges posed by the pupil's behaviour at the home school are considered to be being successfully addressed at the receiving school, the move can be made permanent.
- If the challenges posed by the pupil's behaviour at the home school are

considered not to be being successfully addressed at the receiving school, the child will return to the home school.

- **Fresh Starts do not happen very often**

A fresh start is good because your son/daughter will have extra support in the new school and be monitored closely in the 6 week trial.

- **When a Fresh Start could be helpful**

It could be helpful if your son/daughter is beginning to get into trouble with school, or falling out with their peers, and you feel that a fresh start in a school where pupils and/or staff do not know them.

- **When a Fresh Start isn't helpful**

It is not helpful if your son/daughter has serious behaviour difficulties that they will take with them to a new school. It is not helpful if they are in the middle of receiving some additional support or on a behaviour plan.

What happens?

1. The head teacher will contact another school to discuss the possibility of a Fresh Start.
2. The two heads may agree to meet to discuss the possible move to the school (this meeting should also include the Exclusions Officer).
3. If a move is to happen (only if all parties, both schools & parents) then a further planning meeting should take place and all involved agencies invited to attend.
4. Schools would be expected to admit within 10 days of the agreement to a Fresh Start.

5. Review meetings will be held between the schools, Exclusion Officer and in some cases the parents at 3 & 6 week intervals.

6. If, after the 6 week trial period the placement is agreed then the pupil remains at the new school and moves onto the new school roll. If the placement has failed then the pupil would return to the original school and the process would start again (see flowchart).

Who to talk to - who can help?

School Staff - who are involved with your child. Headteacher, form tutor or head of year.

Exclusion Officer - The local authority EO is available to discuss any part of the process with either parents or schools.

Education Welfare Officer - The EWO for the particular school is also able to advise on attendance, process and school matters.

