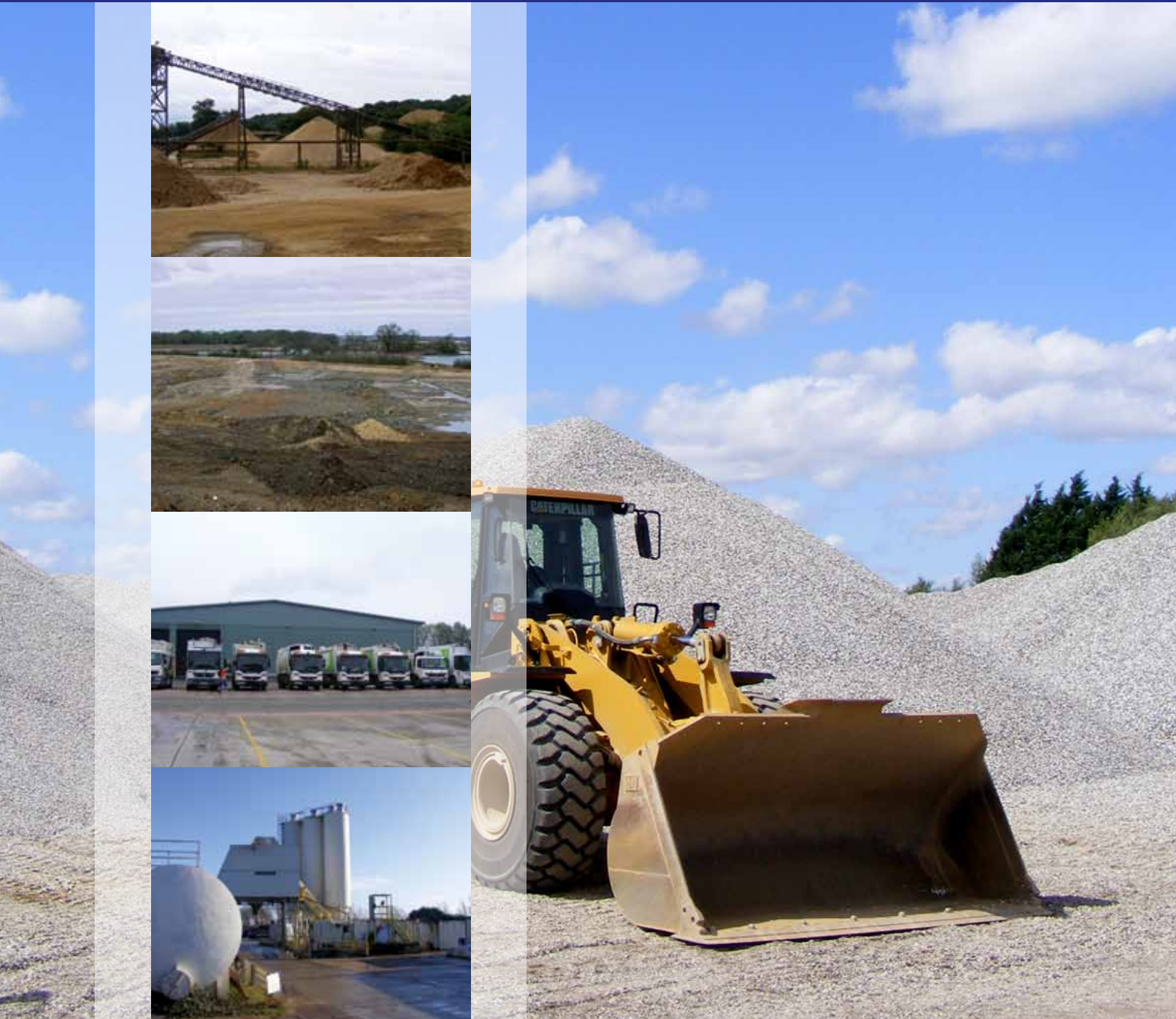


West Berkshire Minerals and Waste Local Plan Glossary November 2020

West Berkshire Local Plan



Term	Acronym	Definition
Acre		A unit of measurement equal to 43,560 square feet (approximately 4,047m ² or 40% of a Hectare).
Aftercare		Steps necessary to bring restored land up to the required standard for agriculture, forestry or amenity, normally over a period of 5 years.
Afteruse		The succeeding use to which a mineral working is restored. Under the provisions on the planning acts the afteruse of a mineral site can be agriculture, forestry or amenity uses.
Aggregates (Construction Aggregates / Construction minerals)		<p>Construction aggregates are used in the construction industry to produce concrete, mortar, asphalt, etc. Aggregates are usually broken down into 3 principal types:</p> <p>Primary Aggregates (land won and marine), Secondary Aggregates and Recycled Aggregates:</p> <p>Land won primary aggregates Construction aggregates, such as sand, gravel and crushed rock (mainly limestone, sandstone and igneous rock), won from the land (quarries). Marine aggregates Construction aggregates, such as sand and gravel dredged from the seabed.</p> <p>Secondary aggregates Construction aggregates derived as a by-product from industrial activities such as colliery spoil, ashes etc</p> <p>Recycled aggregates Construction aggregates produced by processing “waste” materials (usually construction and demolition waste).</p>
Aggregate Working Party	AWP	<p>Aggregate Working Parties are technical advisory groups of mineral planning authorities and other relevant organisations covering specific geographical areas who work together to:</p> <ul style="list-style-type: none"> produce fit-for-purpose and comprehensive data on aggregate demand and supply in their area; and provide advice to individual mineral planning authorities and to the National Aggregate Co-ordinating Group.

Term	Acronym	Definition
Agricultural Land Classification	ALC	Grading of agricultural land quality used in England and Wales. There are 5 grades of land. Grade 1 – Excellent quality agricultural land Grade 2 – Very good quality agricultural land Grade 3a – Good quality agricultural land Grade 3b – Moderate quality agricultural land Grade 4 – Poor quality agricultural land Grade 5 – Very Poor quality agricultural land
Air Quality Management Area	AQMA	Area designated (under the Environment Act) by local authorities following local assessment of air quality where individual pollutants are forecast to exceed standards defined in the National Air Quality Strategy.
Alternatives		Different ways of achieving the Plan objectives. Sometimes referred to as Options.
Alternative aggregate sources		Aggregate sources other than primary aggregates (land won and marine). Effectively this is an umbrella term for secondary aggregates and recycled aggregates
Amenity		The enjoyment of a location. “Amenity land” is a range of after-uses including open space, nature conservation, or other forms of public access.
Anaerobic digestion	AD	Biological treatment of biodegradable organic waste in the absence of oxygen. Results in the generation of biogas (rich in methane and can be used to generate heat and/or electricity), fibre (can potentially be used as a soil conditioner) and liquor (can potentially be used as a liquid fertiliser).
Ancient Woodland		Areas that have had continuous woodland cover since at least 1600 and have only been cleared for underwood or timber production.
Authority Monitoring Report	AMR	A report, usually produced on an annual basis, that presents an analysis of existing (‘saved’) policies, progress on the Local Development Scheme (see below) and note if any adjustments to the scheme are needed. Formerly referred to Annual Monitoring Report
Apportionment Rate		The specified rate of extraction of aggregates to be provided for in the mineral landbank.
Appropriate Assessment	AA	This is a part of the Habitats Regulation Assessment (HRA) where assessment of potential development sites is undertaken to consider their impact on protected European protected habitat sites.
Aquifer		A permeable water-bearing stratum which is capable of storing and yielding water when tapped by a well.

Term	Acronym	Definition
Area of Outstanding Natural Beauty	AONB	Areas of land designated under Sections 87 and 88 of the National Parks and Access to the Countryside Act 1949, where the primary purpose is the conservation and enhancement of natural beauty, which includes protecting flora, fauna, geology and landscape features. Natural England is responsible for formally designated AONBs and advising on policies for their protection. 74% of West Berkshire is within North Wessex Downs AONB.
Asphalt		A natural or artificial mixture in which bitumen is combined with a substantial proportion of mineral matter.
Best and Most versatile agricultural land		Grade 1,2 and 3a of the Agricultural Land Classification.
Biodegradable waste		Waste that can be broken down by micro-organisms and other living things. This waste is capable of undergoing anaerobic or aerobic decomposition and includes waste such as food and garden waste, and paper and paperboard.
Biodegradable Municipal Waste	BMW	Biodegradable waste that originates from the municipal waste stream.
Biodiversity Opportunity Areas	BOA	These are areas that have been identified by the Berkshire Nature Conservation Forum and agreed by the South East England Biodiversity Forum. There are 17 which have currently been identified, either whole or in part, across West Berkshire. BOAs do not represent a statutory designation or a constraint upon development, rather, they are the areas where biodiversity improvements are likely to have the most beneficial results at a strategic scale. The Council will therefore pursue net gains for biodiversity in and around BOAs and projects which seek to enhance biodiversity within West Berkshire, particularly based on Biodiversity Opportunity Areas, will be supported.
Bottom Ash		Bottom ash is part of the non-combustible residue of combustion in a furnace or incinerator.
Borrow pit		Short term mineral workings opened locally to supply material for a specific construction project.
British Geological Survey	BGS	The British Geological Survey is a world-leading geological survey. It focuses on public-good science for government, and research to understand earth and environmental processes. The British Geological Survey carries out a range of research on the sustainable development of mineral resources

Term	Acronym	Definition
Buffer Zone		An area that separates mineral workings and waste management facilities from adjacent areas.
Bund		An embankment, or mound, formed from natural or inert material, usually soil, used either to screen a site from view or to mitigate noise emission from a site.
Cement		Substance made by roasting lime and clay - sets hard when mixed with water. May be used with sand to form a mortar or with sand and gravel to make concrete.
Civic Amenity Site	CAS	Supervised facilities where members of the public can bring and discard a variety of household (municipal) waste. Civic Amenity Sites typically cater for paper, plastic, metal, glass and bulky waste such as tyres, refrigerators, electronic products, waste from DIY activities and garden waste. Also see HWRC.
Climate Change		Effect on Earth's climate caused by greenhouse gas emissions.
Clinical Waste		Waste arising from medical, nursing, dental, veterinary, pharmaceutical or similar sources that may present risks of infection.
Clinical Waste Incinerator	CWI	A facility that can incinerate clinical waste.
Combined heat and power	CHP	The simultaneous generation of usable heat and power (usually electricity) in a single process.
Commercial and Industrial Waste	C & I	Waste arising from premises used for industry, trade or business, and hence may include a wide range of waste material. This does not include sewage.
Composting		The breakdown of organic matter by the action of micro-organisms into usable end-products. A method of processing organic waste that can reduce the amount of waste going to landfill.
Concrete		Mixture of gravel, sand, cement and water used for construction.
Concrete batching plant		Plant (sometime mobile) which produces ready mixed concrete for delivery to construction sites.
Conservation Area	CA	Area of special architectural or historical interest as defined in the Planning (Listed Buildings and Conservation) Act1990
Construction and Demolition Waste	C & D	Construction and Demolition wastes that arise from the construction or demolition of buildings and/or civil engineering infrastructure, whether segregated or mixed. Although often described as inert, that can be misleading

Term	Acronym	Definition
		as C & D waste may include material such as timber, paper, plasterboard, and paint, which need to be separated out if the waste is to be re-used, or disposed of to inert landfill.
Construction, Demolition and Excavation Waste	CDEW or CDE	'CDEW' is an umbrella term for the sum (or any mixture) of 'C&D waste' and 'excavation waste'.
Consultee		An interested party who has made comments on a stage of the plan making process, also referred to as "respondent".
Crushed concrete		Concrete from demolition sites, crushed and reused as aggregate for construction. Part of the C&D waste stream.
Crushed Rock		Limestone, sandstone and igneous rocks which are mechanically broken down for use as aggregates by the construction industry (can also include hard occurrences of chalk, ironstone, slate etc).
Cumulative Effects		Effects that result from changes caused by a project, plan, programme or policy in association with other past, present or reasonably foreseeable future plans and actions.
Cumulative impact		Refers to the combined impacts of a site proposal with existing or proposed sites in the local area.
De-watering		The removal of surface or ground water that accumulates in a mineral extraction site by the means of continual or seasonal pumping to facilitate mineral working.
Deliverability		Refers to the likelihood of a potential strategic site allocation coming forward for development; for example, including the support of the landowner and whether there are any key planning obstacles to overcome.
Demolition Waste		Masonry and rubble wastes arising from the demolition or reconstruction of buildings or other civil engineering structures. A subset of the C&D waste stream.
Department for Business, Energy & Industrial Strategy		Government department for economic growth, clean energy and tackling climate change.
Development Management		The sector of land-use planning that deals with the processing and enforcement of planning applications and decisions under the Town and Country Planning legislation. Formerly "Development Control"
Development Plan (Statutory)		The Development plan is a set of documents that sets out policies and proposals for the development and use of land within the area covered by the plan.

Term	Acronym	Definition
development plan)		Development management decisions must conform to the development plan, unless material considerations indicate otherwise.
Development Plan Document	DPD	A Local Development Document which forms part of the statutory development plan.
Disposal		Disposal means any operation which is not recovery even where the operation has as a secondary consequence the reclamation of substances or energy.
Domestic Waste		Waste or refuse that arises from private houses and other domestic dwellings.
Duty to Cooperate	DTC	<p>The duty to cooperate was created in the Localism Act 2011, and amends the Planning and Compulsory Purchase Act 2004. It places a legal duty on local planning authorities, county councils in England and public bodies to engage constructively, actively and on an ongoing basis to maximise the effectiveness of Local and Marine Plan preparation in the context of strategic cross boundary matters.</p> <p>The duty to cooperate is not a duty to agree. But local planning authorities should make every effort to secure the necessary cooperation on strategic cross boundary matters before they submit their Local Plans for examination.</p>
End of life vehicles	ELV	An end of life vehicle is classed as a waste. Authorised treatment facilities need to obtain an environmental permit from the Environment Agency.
Energy from Waste	EfW	<p>"Energy from waste" is a process to convert energy stored in waste into fuel or electric power.</p> <p>The main ways of recovering energy from wastes include waste incineration, controlled anaerobic digestion which produces biogas and using biogas, which is a by product of biodegradation</p> <p>– e.g. landfill gas</p>
Energy Minerals		Energy minerals are used to produce electricity, fuel for transportation, heating for homes and offices and in the manufacture of plastics. Energy minerals include coal, oil, natural gas and uranium.
Environment Agency	EA	The Environment Agency is responsible for waste regulation and Integrated Pollution Prevention and Control (IPPC), and also has a key role in the provision of information about waste management, including data and

Term	Acronym	Definition
		technical information.
Environmental Impact Assessment	EIA	A process by which information about the environmental effects of a project is collected, both by the developer and from other sources, and taken into account by the planning authority in determining planning applications. Project types are contained in the Town and Country Planning (Environmental Impact Assessment) (England and Wales) Regulations 2017.
Equalities Impact Assessment	EqIA	Undertaken to assess whether there are any equalities implications for people with any of the nine protected characteristics in the Equality Act 2010 (as amended).
Environmental Statement	ES	A document to be prepared following an Strategic Environmental Assessment which provides a systematic and objective account of the significant environmental effects to which the proposed project is likely to give rise. Every ES must contain a non-technical summary, which will enable non-experts to understand its findings.
Environmental Permit		Businesses that manage or produce waste or emissions that pollute the air, water or land may need an environmental permit. Environmental Permits are administered and monitored by the Environment Agency.
Examination (in Public)	EIP	All Local Development Documents will be subject to Examination in Public by an independent Planning Inspector who will consider representations on their content and the “soundness” of the documents.
Exempt Sites / Activities		Lower risk waste management activities such as some reclamation and recycling activities are usually not seen as a threat to the environment or human health. They are therefore, exempt from the need to obtain a Waste Management Licence. There are around 45 categories of exemption, most of which are subject to specific constraints on waste types, quantities, capacities and duration of storage. Exempt activities need to be registered with the Environment Agency.
Excavation waste		Excavation waste means naturally occurring soil, stone, rock and similar materials (whether clean or contaminated), which have been excavated as a result of site preparation activities.
Flood Zone		Flood zones refer to the probability of river and sea flooding and flood zone maps are held by the Environment Agency. There are 4 flood zones, which provide an indication of flood risk. Flood Zone 1 - low risk of flooding (less than 1 in 1,000

Term	Acronym	Definition
		<p>annual probability)</p> <p>Flood zone 2 - Medium risk of flooding (between 1 in 100 and 1 in 1000 annual probability of river flooding)</p> <p>Flood zone 3a - High risk of flooding (1 in 100 or greater annual probability of river flooding)</p> <p>Flood zone 3b - Functional floodplain (land where water has to flow or be stored in times of flood.</p>
Floodplain		The floodplain of a watercourse is identified as that area of land at risk of flooding when flows in the watercourse channel overtop its banks.
Fly Ash		Fly ash, also known as flue-ash, is one of the residues generated in combustion, and comprises the fine particles that rise with the flue gases. Ash that does not rise is called bottom ash.
Geographical Information System	GIS	Technology that manages, analyses, and disseminates geographic information.
Geological Disposal Facility	GDF	<p>The UK has accumulated radioactive waste from a range of sources including generating electricity in nuclear power stations, using radioactive materials in industry, medicine and research, and from defence-related nuclear programmes.</p> <p>The UK Government is committed to implementing geological disposal for the safe and secure management of higher activity radioactive waste over the long term.</p>
Greenhouse Gas		Gases such as carbon dioxide, methane, and CFCs (chlorofluorocarbon) which contribute to climate change by trapping heat between the Earth's surface and the atmosphere.
Groundwater		Water present in underground strata which fills pores and fissures.
Habitats Regulations Assessment	HRA	A statutory assessment duty that considers and assesses impacts of implementing a plan or project on the integrity of the nature conservation sites designated under European legislation (European Directive 92/43/EEC translated into British law by Regulation 102 of the Conservation of Habitats and Species Regulations 2010).
Hazardous waste		Waste which due to its chemical, physical or other properties presents a hazard to humans and/or the environment, and which since July 2004 if disposed of to landfill must be kept separate from other wastes, in a specifically licensed facility.
Hectare	ha	An area of 10,000 square meters. One hectare = 2.471 acres.

Term	Acronym	Definition
Hoggin		A naturally occurring mineral deposit comprising of a mixture of clay, gravel and sand. Often used as a surface for paths.
Household waste		Waste from a domestic property, caravan, and residential home or from premises forming part of a university or school or other educational establishment; premises forming part of a hospital or nursing home.
Household Waste Recycling Centre	HWRC	A site operated on behalf of the Waste Disposal Authority to which the public may deliver non-business waste and at which a range of materials (such as metals, paper, glass and engine oil) are recycled.
Hydrocarbons		Compounds consisting wholly of hydrogen and carbon and which form the bulk of oil and natural gas. Generally subdivided into: Conventional hydrocarbons (such as oil and gas where the reservoir rock is permeable, such as sandstone or limestone) and Unconventional hydrocarbons (such as oil and gas where the reservoir rock are shales or coal seams)
Hydrogeological Survey		The investigation of movement of water below the surface (groundwater).
Hydrological Survey		The investigation of movement of water includes surface and groundwater.
Indicator		Measure of change to a system or objective
Industrial minerals		Industrial minerals are non-metallic minerals used in a range of industrial applications including the manufacture of chemicals, glass, fertilisers and fillers in pharmaceuticals, plastics and paper. Industrial minerals include salt, clays, limestone, silica sand, phosphate rock, talc and mica.
Industrial Waste		Waste from any of the following premises: factory; provision of transport services (land, water and air); purpose of connection of the supply of gas, water, electricity, provision of sewerage services, provision of postal or telecommunication services (Environmental Protection Act 1990).
Inert waste		Waste which does not give rise to significant quantities of toxic leachate or landfill gas and which will not biodegrade or easily decompose. This generally consists of uncontaminated topsoil; subsoil; clay; sand; brickwork; stone; silica; and glass.
Interim Development Order	IDO	A mineral permission granted after 21 July 1943 and before 1 July 1948, which has been preserved by successive Planning Acts as a valid permission in respect of development which has not been carried out by 1st

Term	Acronym	Definition
		July 1948.
Interim Environmental Report	IER	A non-statutory stage of the SA/SEA process. The purpose of this assessment was to aid stakeholders in understanding the sustainability issues that surround the various options when they are making their responses to the Issues and Options consultation.
Issues and Options	I & O	Non-statutory initial public consultation stage relating to the emerging WBMWLP.
Landbank		A stock of mineral reserves with planning permission for extraction. Principally a monitoring tool to provide a mineral planning authority with early warning of possible disruption to the provision of an adequate and steady supply of land-won aggregates in their particular area
Landfill		The disposal of waste material by tipping into voids in the ground. Landfills are generally classified as one of the following: Hazardous; Non-hazardous; Inert.
Landfill Allowance Trading Scheme	LATS	A scheme whereby waste disposal authorities are allocated allowances for the amount of biodegradable municipal waste that can be disposed of to landfill.
Landfill Directive		A European Community Directive (1999/31/EC) which aims to prevent, or reduce as far as possible, the negative effects of landfill.
Landfill Gas		A by-product from the digestion by anaerobic bacteria of putrescible matter present in waste deposited on landfilled sites. The gas is predominantly methane (65 per cent) together with carbon dioxide (35 per cent) and trace concentrations of a range of other vapours and gases.
Landfill Tax		An environmental tax introduced in 1996 which applies to waste disposed of at landfill sites licensed under UK environmental law.
Landraising		Deposition of waste above the level of the surrounding land or the original ground level. It is usually deposited onto unworked ground or onto land previously filled to the original ground level. The deposit of waste in a former mineral working normally requires a degree of “doming” above surrounding ground levels in order to ensure adequate control of surface water run-off – this is not generally counted as landraising.
Landspreading		The application of solid wastes, sludges and liquid wastes to the land without the removal of the topsoil layer. Landspreading is a common means for disposal of treated sewage sludge and agricultural wastes.

Term	Acronym	Definition
Land Use Classifications		Land and buildings are categorised into various categories known as 'Use Classes'. See the Town and Country Planning (Use Classes) Order 1987 (as amended).
Land-won aggregates		Virgin aggregates dug from the land (used to differentiate between these materials and recycled and marine-dredged aggregates)
Leachate		A liquid generated in landfill sites from the inherent moisture of present in the waste and/or arises through decomposition. Older landfill sites may not be sealed, and leachate may be generated through the ingress of rain or groundwater.
Local Aggregate Assessment	LAA	A Local Aggregate Assessment is an annual assessment of the demand for and supply of aggregates in a mineral planning authority's area.
Local Authority Collected Municipal Waste	LACMW	LACMW refers to the previous 'municipal' element of the waste collected by local authorities. That is household waste and business waste where collected by the local authority and which is similar in nature and composition as required by the Landfill Directive.
Local Authority Collected Waste (LACW)	LACW	All waste collected by the local authority. This is a slightly broader concept than LACMW as it would include both this and non municipal fractions such as construction and demolition waste. LACW is the definition that would be used in statistical publications, which previously referred to municipal waste.
Local Development Scheme	LDS	A timetable and project plan for the production of all the development plan documents relating to a Local Plan.
Local Enterprise Partnership	LEP	Local enterprise partnerships are partnerships between local authorities and businesses. They decide what the priorities should be for investment in roads, buildings and facilities in the area.
Local Planning Authority	LPA	The local authority or council that is empowered by law to exercise statutory town planning functions for a particular area
Low-level restoration		The re-establishment of land following mineral extraction, without in-filling.
Listed Building		Building included on a list of buildings of special architectural or historic interest.
Local Waste Assessment	LWA	A Local Waste Assessment is an assessment of the demand for and supply of waste management capacity in a waste planning authority's area.
Materials Recovery (or Reclamation or Recycling) Facility	MRF	A special sorting 'factory' where mixed recyclables are separated into individual materials prior to despatch to reprocessors who wash and prepare the materials for

Term	Acronym	Definition
		manufacturing into new recycled products. Usually associated with the C&I and MSW waste stream.
Managed Aggregate Supply System	MASS	Construction aggregate supply in England has been managed through MASS for some 30 years. Previously, national guidelines on the level of provision needed for future supply of aggregates was apportioned to MPAs through the RSS. Since the abolition of the RSS's the system continues in a modified manner through the NPPF, PPG, AWP's the NCG and LAA's
Metal Recovery Site	MRS	Recovery and bulking up facilities that concentrates on recovering metals as high quality input to industry. Facilities include traditional scrap yards and car breakers.
Million tonnes	Mt	Measure of volume
Million tonnes per annum	Mtpa	Measure of volume per year
Minerals		Naturally occurring substances with distinctive chemical and physical properties. Can include minerals such as sand, gravel, chalk, clay, oil and gas extracted from the ground.
Minerals and Waste Local Plan	MWLP	A Local Development Document which forms part of the statutory development plan that relates solely to minerals and waste planning matters.
Mineral Consultation Area	MCA	A geographical area, based on a Mineral Safeguarding Area, where the district or borough council should consult the Mineral Planning Authority for any proposals for non-minerals development.
Mineral Deposits		Defined in planning terms as a mineral (such as rock, or sand and gravel, or other material) which has a commercial value.
Mineral Resources		A mineral deposit, for which there is a reasonable prospect for economic extraction.
Mineral Planning Authority	MPA	A local authority with the legal responsibility for processing mineral applications for the authority area.
Minerals Preferred Area		Identified site where there will be a general presumption in favour of mineral extraction being granted planning permission – subject to specific planning considerations
Mineral Reserves		Minerals under land with planning permission for mineral extraction
Mineral Safeguarding Area	MSA	An area identified in order to ensure due consideration of the possibility of mineral extraction prior to development, or of the compatibility with current or future mineral operations, is undertaken in the determination of certain non mineral planning applications.

Term	Acronym	Definition
Ministry of Housing, Communities & Local Government	MHCLG	The job of the Ministry for Communities and Local Government is to help create sustainable communities, working with other Government departments, local councils, businesses, the voluntary sector, and communities themselves.
Mitigation		Measures to avoid, reduce or offset the adverse effects.
Municipal Solid Waste	MSW	More commonly known as rubbish — consists of everyday items such as (but not limited to) product packaging, grass clippings, furniture, clothing, bottles, food scraps, newspapers, appliances, paint, and batteries. This waste is discarded by the public either at their place of residence or in public locations.
Municipal Waste Management Strategies	MWMS	A strategy produced by local authorities to deliver more sustainable waste management and break the link between economic growth and the amount of waste produced so that the disposal of waste is the last option for dealing with it.
National Aggregates Survey		A quadrennial nation-wide analysis of all aggregate production, consumption, reserves and movements. Also referred to as “aggregates monitoring survey” (AM survey).
National Aggregate Co-ordinating Group	NCG	The purpose of the National Aggregate Co-ordinating Group is to monitor the overall provision of aggregates in England, and to provide timely advice to Government and individual Aggregate Working Parties.
National Planning Policy Framework	NPPF	The NPPF sets out the Government’s planning policies for England and how these are expected to be applied (also referred to as the Framework).
National Planning Policy for Waste	NPPW	The NPPF sets out the Government’s waste planning policies for England and how these are expected to be applied (also referred to as the Framework).
National Waste Management Plan for England	NWMP	The NWMP sets out the Government’s policies and strategy for waste. It provides an analysis of the current waste management situation in England, and evaluates how it will support implementation of the objectives and provisions of the revised Waste Framework Directive.
National Waste Plan		Article 28 of the Waste Framework Directive requires that all member states shall have a “National waste plan” In England this comprises: NWMP, NPPW, National Policy Statements for Waste Water and Hazardous Waste, and all local level Waste development plans.
Non-hazardous waste		Waste which cannot be classified as inert (see inert waste) but does not fall into a class identified as hazardous (see hazardous waste). Typically, this is biodegradable municipal waste (mostly household waste)

Term	Acronym	Definition
		and biodegradable commercial and industrial waste.
Non-inert waste		A term previously used to define waste which is biodegradable, but does not pose particular handling problems – broadly equivalent to the “non-hazardous” classification under EU legislation.
Objective		Statement of what is intended, specifying the desired direction of change.
Overburden		Material (Soil, clay or rock) which must be removed before extracting the mineral deposit beneath it.
Previously Developed Land (Brownfield land)	PDL	<p>Land which is or was occupied by a permanent structure, including the curtilage of the developed land (although it should not be assumed that the whole of the curtilage should be developed) and any associated fixed surface infrastructure. This excludes:</p> <p>land that is or has been occupied by agricultural or forestry buildings;</p> <p>land that has been developed for minerals extraction or waste disposal by landfill purposes where provision for restoration has been made through development control procedures;</p> <p>land in built up areas such as private residential gardens, parks, recreation grounds and allotments</p> <p>Land that was previously-developed but where the remains of the permanent structure of fixed surface structures have blended into the landscape in the process of time</p> <p>PDO is also known as Brownfield Land</p>
Permitted Reserves		Mineral deposits with the benefit of planning permission for extraction.
Planning Practice Guidance Website	PPG (NPPG)	<p>Planning Practice Guidance Website http://planningguidance.planningportal.gov.uk/</p> <p>Also referred to as NPPG</p>
Policies Map		The Policies Map will illustrate, on an Ordnance Survey base, all the policies and proposals in a local plan. It will always reflect the up-to-date planning strategy for the area. For minerals and waste it will include safeguarding areas and any allocations.
Preparing for re-use		Preparing for re-use means checking, cleaning or repairing recovery operations, by which products or components of products that have become waste are

Term	Acronym	Definition
		prepared so that they can be re-used without any other pre-processing.
Primary Aggregates		Naturally occurring sand, gravel and hard rock used for construction purposes. Includes land won aggregates and marine aggregates
Proximity Principle		The principle that a network of waste facilities enable waste to be disposed of and mixed municipal waste recovered in one of the nearest appropriate installations by means of the most appropriate technology.
Public Rights of Way	PROW	Footpaths, bridleways, tracks and lanes used as public paths and public byways.
Putrescible Waste		Waste readily able to be decomposed by bacterial action. Landfill gas and leachate can occur as by-products of decomposition.
Pyrolysis		In pyrolysis, thermal decomposition takes place in the absence of oxygen. The energy efficiency of this process can be high but operational and high capital costs currently limit its economic viability.
Pulverised Fuel Ash	PFA	A waste product of pulverised fuel fired powerstations (usually coal). Can be used as a secondary aggregate.
Railhead Aggregates Depot		A reception point for aggregates moved in bulk by rail (normally over comparatively long distances) for onward distribution, normally by road, normally comprising a railway siding, off-loading and storage facilities, and sometimes including mineral processing and other plant.
Radioactive waste		<p>Radioactive waste is defined in terms of waste streams, as documented by the Nuclear Decommissioning Authority. A waste stream summarises waste materials or a collection of waste items at a particular site, usually in a particular facility and/or from particular processes or operations. It is often distinguishable by its radionuclide content and in many cases also by its physical and chemical characteristics. The categories of radioactive waste are defined in the UK as follows:</p> <p>High level waste (HLW) Waste in which the temperature may rise significantly as a result of the radioactivity, so this factor has to be taken into account in the design of storage and/or disposal facilities</p> <p>Intermediate level waste (ILW) Waste exceeding the upper boundaries of radioactively level for LLW, but do not require heating to be taken into account in the design of storage or disposal facilities</p> <p>Low level waste (LLW) Wastes containing radioactivity greater than 0.4 Megabecquerel per tonne, but not exceeding 4 Gigabecquerel per tonne of alpha, or 12 Gigabecquerel per tonne of beta/gamma activity.</p>

Term	Acronym	Definition
		Very low level waste (VLLW) A subset of Low level waste Higher Activity Waste (HAW) Includes HLW, ILW and some LLW that is unsuitable for disposal in the Low Level Waste Repository.
Ramsar Site		A statutory designation adopted following an international conference, held in 1971 in Ramsar, Iran, which identifies Wetlands of International Importance especially as Wildfowl Habitat (Cmmd 6465).
Reclamation		<p>Reclamation has a special meaning in minerals planning, of operations designed to return the area to an acceptable environmental condition, whether for the resumption of the former land use or for a new use. It includes events which take place before and during extraction (for example, correct stripping and protection of soils); and also operations after extraction which may include filling and contouring, the creation of planned water areas, landscaping and tree planting. Reclamation includes “restoration”, “aftercare” and “after-use” which are described below.</p> <p>Restoration comprises steps to return land to its original or former condition following mineral working by using subsoil, topsoil and/or soil-making material.</p> <p>Aftercare provides for steps to be taken to bring land to the required standard for use for agriculture, forestry or amenity. These may include planting, cultivating, fertilising, watering, drainage or otherwise treating the land.</p> <p>After-use is used to mean the ultimate use after mineral working for agriculture, forestry, amenity (including nature conservation).</p>
Recovery		<p>Recovery means any operation the principal result of which is waste serving a useful purpose by replacing other materials which would otherwise have been used to fulfil a particular function, or waste being prepared to fulfil that function, in the plant or in the wider economy.</p> <p>A range of waste management operations are set out as recovery in the Waste Framework Directive 2008/98/EC.</p> <p>They include composting, recycling, anaerobic digestion, gasification, pyrolysis, and energy recovery.</p>
Recycling		<p>Recycling means any recovery operation by which waste materials are reprocessed into products, materials or substances whether for the original or other purposes.</p> <p>It includes the reprocessing of organic material but does</p>

Term	Acronym	Definition
		not include energy recovery and the reprocessing into materials that are to be used as fuels or for backfilling operations.
Recycled aggregates		Aggregates obtained from the treatment of materials formerly used for another purpose (usually construction and demolition waste).
Reduction		Use of technology or practices to reduce waste generation from production, or production of longer lasting products with lower waste generation potential, or removing material from the waste stream.
Respondent		See consultee
Regionally Important Geological/ Geomorphological Sites	RIGS	A national scheme promoted by English Nature and organised on a county basis. A non-statutory designation to promote the protection of sites for research, science, education, leisure and amenity.
Replacement Minerals Local Plan for Berkshire	RMLP	Strategic Minerals Plan for Berkshire covering the period up to the 31st December 2006. Adopted 2001. Key policies have been 'saved' until the RMLP is replaced in its entirety by the MWLP
Resource		A potential mineral deposit where the quality and quantity of material has not been tested.
Re-use		Means any operation by which products or components that are not waste are used again for the same purpose for which they were conceived.
Safeguarding		A process introduced to ensure a site is protected for development of a specific facility, for example a rail depot. (see also Mineral/Waste Safeguarding Area)
Sand and Gravel		In West Berkshire there are two main types of sand and gravel: sharp sand and gravel, suitable for most types of concreting purposes, and therefore an important material for the construction industry; and soft sand, also called building sand, suitable for mortars, plasters and asphalt.
'Saved' policies and plans		The 2008 planning regime included arrangements for retaining policies in adopted plans whilst the replacement development plans are being prepared, even when this extends them beyond their original end date. This process is called 'saving'.
Scheduled Monument (Ancient Monument)		A nationally important archaeological site included in the Schedule of Ancient Monuments maintained by the Secretary of State for the Environment under the Ancient Monuments and Archaeological Areas Act 1979

Term	Acronym	Definition
Secondary Aggregates		Mineral wastes and industrial by-products used in the construction industry. E.g. colliery spoil, china clay waste, slate waste, power station pulverised fuel ash.
Sharp sand (Concreting sand)		Generally a large grained and angular sand, usually found in association with gravel deposits. Typically deposited within river channels as opposed to oceans. Their sharper texture means that these deposits are predominately used in the manufacture of concrete, particularly given that sharp sand often occurs in conjunction with gravels, which provide the coarse aggregate component of the concrete mix.
Silt		A fine-grained sediment having a particle size intermediate between that of fine sand and clay.
Site Waste Management Plan	SWMP	Formerly a regulatory requirement, but still best practice, site waste management plans encourage the effective management of materials and ensure waste is considered at all stages of a development project.
Site of Special Scientific Interest	SSSI	Sites of Special Scientific Interest. Areas of national nature conservation or wildlife importance protected under the Wildlife and Countryside Act 1981, as amended by the Countryside and Rights of Way Act 2000. Natural England identifies SSSIs.
Soft sand (Building sand)		Generally a fine-grained sand where the individual grains are well rounded. Typically deposited in marine environments. The characteristics of these sands mean that they “flow” or are “workable” making them particularly useful in building operations such as the manufacture of mortar.
South East England Aggregates Working Party	SEEAWP	A group established to advise DCLG on options and strategies for dealing with Aggregates. The AWP for the former south east region (previously referred to as the SEERAWP).
South East Plan	SEP	The Regional Spatial Strategy for the former South East region. The South East Plan was adopted on 6 May 2009 and carries due weight according to its degree of conformity with the Framework. Although this plan has been revoked, Policy NRM6 (Thames Basin Heaths Special Protection Area) remains in force. As such, the South East Plan is only relevant insofar as this policy applies.
South East Waste Planning Advisory Group	SEWPAG	A group established to advise the former SEERA on options and strategies for dealing with Waste Management.
Special Area of Conservation	SAC	Site of European conservation importance as a habitat for specified species (Directive 92/43/EEC)

Term	Acronym	Definition
Special Protection Area	SPA	Site of European importance for bird conservation (Directive 79/409/EEC).
Special Waste		See Hazardous Waste
Statement of Community Involvement	SCI	Document setting out how the community will be consulted on major planning applications and in the preparation of the Local Plans and Development plan documents.
Statutory consultee		A consultee prescribed in statute as having to be consulted as part of a planning process.
Statutory Development Plan		The Statutory Development Plan provides the first point of reference in the determination of planning applications.
Strategic Environmental Assessment	SEA	<p>A process to ensure that significant environmental effects arising from policies, plans and programmes are identified, assessed, mitigated, communicated to decision-makers, monitored and that opportunities for public involvement are provided.</p> <p>Scoping Process of deciding the scope and level of detail of the SEA</p> <p>Screening Process of deciding if a plan or programme requires an SEA of other assessment</p> <p>SEA is required by the Planning and Compulsory Purchase Act 2004 and the European Directive of SEA (2001) translated into British Law by the Environmental Assessment of Plans and programmes Regulations 2004 (SEA regulations)</p>
Superquarry		A quarry capable of producing at least 5 million tonnes of rock per annum and with reserves of at least 150 million tonnes.
Surface Water		Water that collects on the surface of the ground, usually after a period of heavy rain.
Sustainability Appraisal	SA	<p>A single appraisal tool which provides for the systematic identification and evaluation of the economic, social and environmental impacts of a proposal.</p> <p>SA is required by the NPPF and the Planning and Compulsory Purchase Act 2004.</p>
Sustainable Development		Development that meets the needs of the present without comprising the ability of future generations to meet their own needs. The NPPF confirms that the purpose of the planning system is to contribute to the achievement of sustainable development. There are three dimensions to

Term	Acronym	Definition
		sustainable development: economic, social and environmental, that give rise to the need for the planning system to perform a number of roles.
Tonne		A metric ton of 1,000kg (One tonne weighs a little less than one imperial tone).
Transfer Stations		Facilities that receive wastes which are then bulked up and transported elsewhere for disposal or recovery. Some transfer stations include, or are associated with, a materials recovery facility to sort out the recoverable wastes prior to disposal of the bulk waste.
Treatment		Treatment means recovery or disposal operations, including preparation prior to recovery or disposal;
Unitary Authority	UA	Administrative unit of Great Britain. Since 1996 the two-tier structure of local government has been replaced by unitary authorities, responsible for all local government services in Scotland and Wales, and in some parts of England, including Berkshire.
Void (space)		The hole (measured by volume) created by mineral working with potential for landfilling with waste.
Waste		Any substance or object the holder discards, or intends to discard, or is required to discard.
Waste Hierarchy		<p>The movement of waste up the waste hierarchy is a key objective of government and is therefore an integral part of the National Waste Management Plan for England and the National Planning Policy on Waste:</p> <p>Waste Hierarchy</p> <ol style="list-style-type: none"> 1. prevention 2. preparing for re-use 3. recycling 4. other recovery 5. disposal.
Waste Disposal Authority	WDA	Local authority responsible for the collection of waste in their administrative boundary and its disposal
Waste Disposal		The process by which residual waste that cannot be reused, recovered or recycled is finally disposed of. The most common forms of disposal are by landfill and incineration (although EFW can constitute recovery).
Waste Electrical and Electronic Equipment	WEEE	The WEE regulations aim to prevent the disposal of electrical and electronic goods and ensure greater levels of recovery and disassembly.
		European directive that sets the basic concepts and definitions related to waste management, such as

Term	Acronym	Definition
Waste Framework Directive	WFD	definitions of waste, recycling, recovery. The Directive lays down some basic waste management principles: it requires that waste be managed without endangering human health and harming the environment, and in particular without risk to water, air, soil, plants or animals, without causing a nuisance through noise or odours, and without adversely affecting the countryside or places of special interest.
Waste Local Plan for Berkshire	WLPB	Strategic Waste Plan for Berkshire covering the period up to the 31st December 2006. Adopted 1998. Key policies now 'saved' until the WLPB is replaced in its entirety by the MWLP.
Waste management		The collection, transport, recovery and disposal of waste, including the supervision of such operations and the after-care of disposal sites.
Waste management licence		Licence granted by the Environment Agency authorising treatment, keeping or disposal of any specified description of controlled waste in or on specified land by means of specified plant.
Waste Planning Authority	WPA	A local authority with responsibility for processing waste applications
Waste minimisation		Avoidance of waste generation – for e.g. the reduction of unwanted outputs from the manufacturing process and the manufacture of products that are likely to result in less waste when they are used.
Waste Preferred Area		Identified site where there will be a general presumption in favour of waste treatment or disposal facilities being granted planning permission – subject to specific planning considerations
Waste Reduction		To make waste production and waste management practices more sustainable, key objectives are to reduce the amount of waste that is produced, make the best use of waste produced and choose practices which minimise the risks of pollution and harm to human health. Waste reduction is concerned with reducing the quantity of solid waste that is produced and reducing the degree of hazard represented by such waste.
Waste Transfer Station	WTS	A facility where waste is unloaded in order to permit its preparation for further transport for recovery, treatment or disposal elsewhere.
Waste treatment		For the purposes of the Berkshire Minerals and Waste Local plan waste treatment means activities in the processing of waste prior to disposal, most commonly through, for example, recovery, recycling composting and other mechanical or biological treatment, but also in the transfer of waste.

Term	Acronym	Definition
Waste Water (Sewage) Treatment Works	WWTW	Facilities for the reception, treatment and disposal of waste water (sewage), operated by the water companies.
Water Table		The top surface of the saturated zone within the aquifer. The water table will fluctuate seasonally and annually.
West Berkshire Minerals and Waste Development Plan Document		Former name of the WBMWLP. The emerging plan was re-named in 2014 to ensure alignment to the NPPF and PPG
West Berkshire Minerals and Waste Local Plan		The emerging local plan that will form part of the statutory development plan for West Berkshire and replace the saved policies in the Replacement Minerals Local Plan and the saved policies in the Waste Local Plan for Berkshire (as far as they apply to the geographical area of West Berkshire).
Windfall site		Umbrella term for mineral sites that are developed that are not included in the minerals development plan. Includes: borrow pits, unallocated sites and sites where minerals are won as a byproduct of another development (such as a marina)

If you require this information in an alternative format or translation,
please call 01635 42400 and ask for the Minerals and Waste
Planning Policy Team.

**West Berkshire Council
Development and Planning**

Council Offices
Market Street
Newbury
RG14 5LD
T: 01635 519111
F: 01635 519408
E: mwdpd@westberks.gov.uk
www.westberks.gov.uk/mwlpps