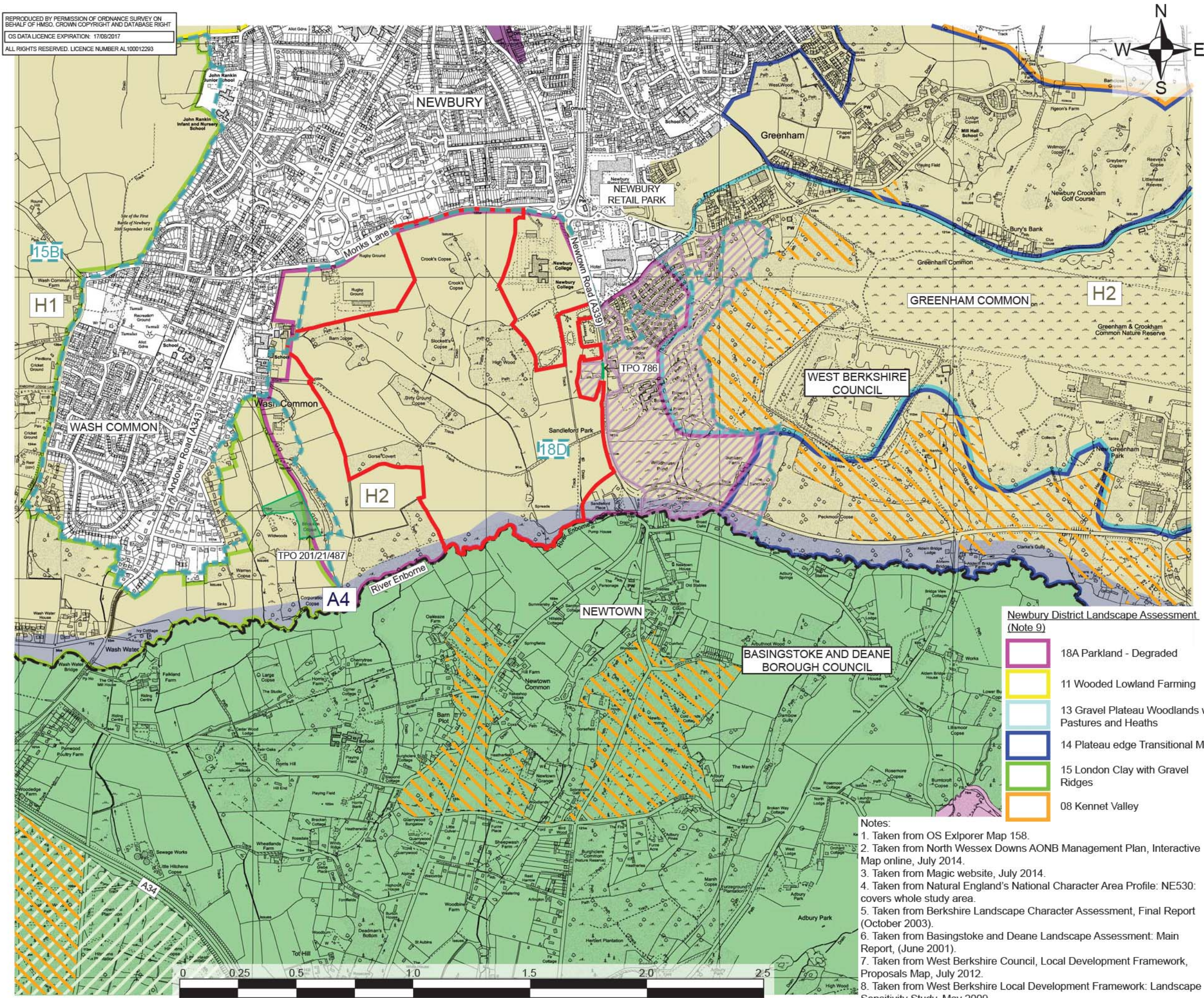


REPRODUCED BY PERMISSION OF ORDNANCE SURVEY ON BEHALF OF HMSO. CROWN COPYRIGHT AND DATABASE RIGHT
OS DATA LICENCE EXPIRATION: 17/08/2017
ALL RIGHTS RESERVED. LICENCE NUMBER AL10012293



LEGEND

- The site
- Local authority boundary (Note 1)
- Open Access Land (Note 1)
- North Wessex Downs Area of Outstanding Natural Beauty (Note 2)
- Sandeford Priory Registered Park and Garden of Special Historic Interest: Grade II (Note 3)
- Tree Preservation Orders
- Conservation Area (Note 7)

National Landscape Character

129: Thames Basin Heaths (Note 4)

Berkshire Landscape Character Assessment (Note 5)

- Landscape Character Type H - Woodland and Heathland**
Landscape Character Area
H1 - Inkpen,
H2 - Greenham
- Landscape Character Type A - Upper Valley Floor**
Landscape Character Area
A4 - Enborne

Basingstoke and Deane Landscape Assessment (Note 6)

- Landscape Character Area 1 - Highclere and Burghclere
- Landscape Character Area 2 - Ecchinswell

West Berkshire LDF: Landscape Sensitivity (Note 8)

- Local Landscape Character Area 18D: Sandeford Park
- Local Landscape Character Area 15B: Wash Common Farmland

Newbury District Landscape Assessment (Note 9)

- 18A Parkland - Degraded
- 11 Wooded Lowland Farming
- 13 Gravel Plateau Woodlands with Pastures and Heaths
- 14 Plateau edge Transitional Matrix
- 15 London Clay with Gravel Ridges
- 08 Kennet Valley

Figure 7.3

- Notes:**
1. Taken from OS Explorer Map 158.
 2. Taken from North Wessex Downs AONB Management Plan, Interactive Map online, July 2014.
 3. Taken from Magic website, July 2014.
 4. Taken from Natural England's National Character Area Profile: NE530: covers whole study area.
 5. Taken from Berkshire Landscape Character Assessment, Final Report (October 2003).
 6. Taken from Basingstoke and Deane Landscape Assessment: Main Report, (June 2001).
 7. Taken from West Berkshire Council, Local Development Framework, Proposals Map, July 2012.
 8. Taken from West Berkshire Local Development Framework: Landscape Sensitivity Study, May 2009.
 9. Taken from Newbury District Wide Landscape Assessment, October 1993.

Revision	By	Chk'd By	Date	Comments

LANGFORD LODGE
109 PEMBROKE ROAD
CLIFTON, BRISTOL
AVON
BS8 3EU
T: 01179 064280
F: 01173 179535
www.slrconsulting.com

SLR

**SANDLEFORD PARK,
NEWBURY**

ENVIRONMENTAL STATEMENT

**LANDSCAPE CHARACTER AND
PLANNING DESIGNATIONS**

04627.00005.16.603.0

Scale AS SHOWN	Date DECEMBER 2017
-------------------	-----------------------

04627.00005.16.603.0-LANDSCAPE CHARACTER AND PLANNING DESIGNATIONS