

445600 445800 446000 446200 446400 446600 446800 447000 447200 447400 447600 447800 448000



### Historical Aerial Photography

Published 1947

Source map scale - 1:10,560

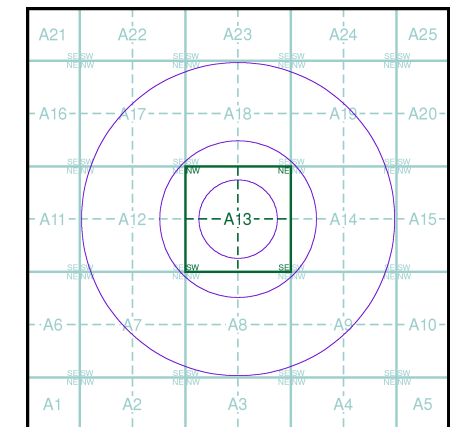
The Historical Aerial Photos were produced by the Ordnance Survey at a scale of 1:1,250 and 1:10,560 from Air Force photography. They were produced between 1944 and 1951 as an interim measure, pending preparation of conventional mapping, due to post war resource shortages. New security measures in the 1950's meant that every photograph was re-checked for potentially unsafe information with security sites replaced by fake fields or clouds. The original editions were withdrawn and only later made available after a period of fifty years although due to the accuracy of the editing, without viewing both revisions it is not easy to spot the edits. Where available Landmark have included both revisions.

© Landmark Information Group and/or Data Suppliers 2010.

### Map Name(s) and Date(s)

SU 46NE  
1947  
1:10,560  
SU 46SE  
1947  
1:10,560

### Historical Aerial Photography - Slice A



### Order Details

Order Number: 40225072\_1\_1  
Customer Ref: 9100  
National Grid Reference: 446840, 164520  
Slice: A  
Site Area (Ha): 0.01  
Search Buffer (m): 1000

### Site Details

Sandford Park, Newtown, NEWBURY, Berkshire



Tel: 0844 844 9952  
Fax: 0844 844 9951  
Web: www.envirocheck.co.uk

© Landmark Information Group and/or Data Suppliers 2012.

0 400 m

**Fig. 11:**

**1961 OS map, 1:10,000**

## Ordnance Survey Plan

Published 1961

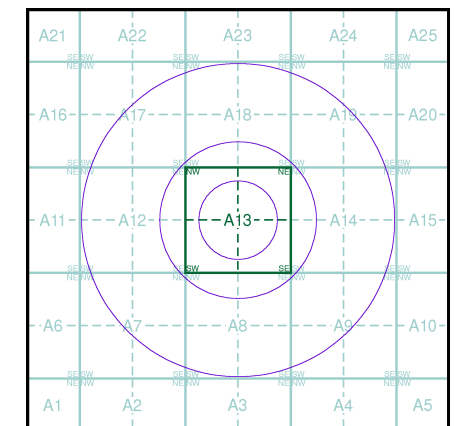
Source map scale - 1:10,000

The historical maps shown were reproduced from maps predominantly held at the scale adopted for England, Wales and Scotland in the 1840's. In 1854 the 1:2,500 scale was adopted for mapping urban areas; these maps were used to update the 1:10,560 maps. The published date given therefore is often some years later than the surveyed date. Before 1938, all OS maps were based on the Cassini Projection, with independent surveys of a single county or group of counties, giving rise to significant inaccuracies in outlying areas. In the late 1940's, a Provisional Edition was produced, which updated the 1:10,560 mapping from a number of sources. The maps appear unfinished - with all military camps and other strategic sites removed. These maps were initially overprinted with the National Grid. In 1970, the first 1:10,000 maps were produced using the Transverse Mercator Projection. The revision process continued until recently, with new editions appearing every 10 years or so for urban areas.

### Map Name(s) and Date(s)

SU46NE	1961	1:10,560
SU46SE	1961	1:10,560

### Historical Map - Slice A



### Order Details

Order Number: 40225072\_1\_1  
 Customer Ref: 9100  
 National Grid Reference: 446840, 164520  
 Slice: A  
 Site Area (Ha): 0.01  
 Search Buffer (m): 1000

### Site Details

Sandleford Park, Newtown, NEWBURY, Berkshire



**Fig. 12:**

**1974-76 OS map, 1:10,000**

## Ordnance Survey Plan

Published 1974 - 1976

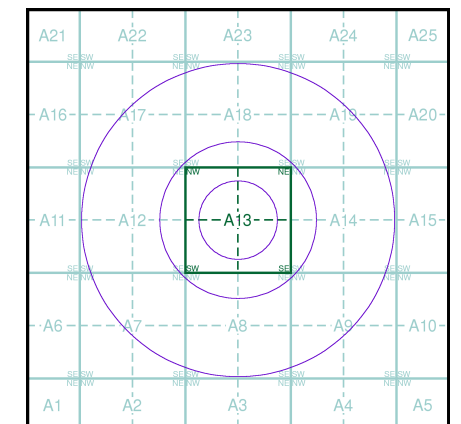
Source map scale - 1:10,000

The historical maps shown were reproduced from maps predominantly held at the scale adopted for England, Wales and Scotland in the 1840's. In 1854 the 1:2,500 scale was adopted for mapping urban areas; these maps were used to update the 1:10,560 maps. The published date given therefore is often some years later than the surveyed date. Before 1938, all OS maps were based on the Cassini Projection, with independent surveys of a single county or group of counties, giving rise to significant inaccuracies in outlying areas. In the late 1940's, a Provisional Edition was produced, which updated the 1:10,560 mapping from a number of sources. The maps appear unfinished - with all military camps and other strategic sites removed. These maps were initially overprinted with the National Grid. In 1970, the first 1:10,000 maps were produced using the Transverse Mercator Projection. The revision process continued until recently, with new editions appearing every 10 years or so for urban areas.

### Map Name(s) and Date(s)

SU46NE	1974	1:10,000
SU46SE	1976	1:10,000

### Historical Map - Slice A



### Order Details

Order Number: 40225072\_1\_1  
 Customer Ref: 9100  
 National Grid Reference: 446840, 164520  
 Slice: A  
 Site Area (Ha): 0.01  
 Search Buffer (m): 1000

### Site Details

Sandleford Park, Newtown, NEWBURY, Berkshire



**Fig. 13:**

**1991-93 OS map, 1:10,000**

### Ordnance Survey Plan

Published 1991 - 1993

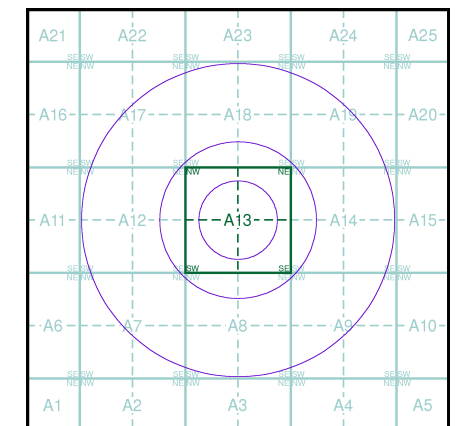
Source map scale - 1:10,000

The historical maps shown were reproduced from maps predominantly held at the scale adopted for England, Wales and Scotland in the 1840's. In 1854 the 1:2,500 scale was adopted for mapping urban areas; these maps were used to update the 1:10,560 maps. The published date given therefore is often some years later than the surveyed date. Before 1938, all OS maps were based on the Cassini Projection, with independent surveys of a single county or group of counties, giving rise to significant inaccuracies in outlying areas. In the late 1940's, a Provisional Edition was produced, which updated the 1:10,560 mapping from a number of sources. The maps appear unfinished - with all military camps and other strategic sites removed. These maps were initially overprinted with the National Grid. In 1970, the first 1:10,000 maps were produced using the Transverse Mercator Projection. The revision process continued until recently, with new editions appearing every 10 years or so for urban areas.

### Map Name(s) and Date(s)

---	SU46NE	---
---	1991	---
---	1:10,000	---
---	SU46SE	---
---	1993	---
---	1:10,000	---

### Historical Map - Slice A



### Order Details

Order Number: 40225072\_1\_1  
 Customer Ref: 9100  
 National Grid Reference: 446840, 164520  
 Slice: A  
 Site Area (Ha): 0.01  
 Search Buffer (m): 1000

### Site Details

Sandleford Park, Newtown, NEWBURY, Berkshire



**Fig. 14:**

**2006 OS map, 1:10,000**



## 10k Raster Mapping

Published 2006

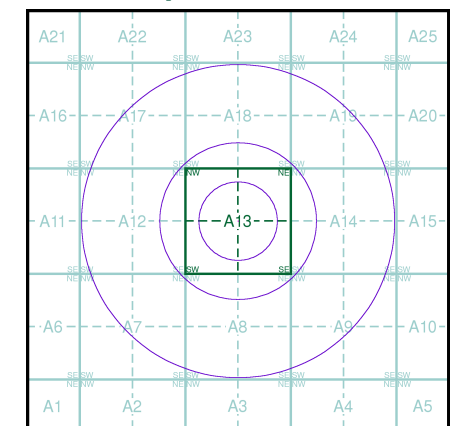
Source map scale - 1:10,000

The historical maps shown were produced from the Ordnance Survey's 1:10,000 colour raster mapping. These maps are derived from Landplan which replaced the old 1:10,000 maps originally published in 1970. The data is highly detailed showing buildings, fences and field boundaries as well as all roads, tracks and paths. Road names are also included together with the relevant road number and classification. Boundary information depiction includes county, unitary authority, district, civil parish and constituency.

### Map Name(s) and Date(s)

SU46NE	2006	1:10,000
SU46SE	2006	1:10,000

### Historical Map - Slice A

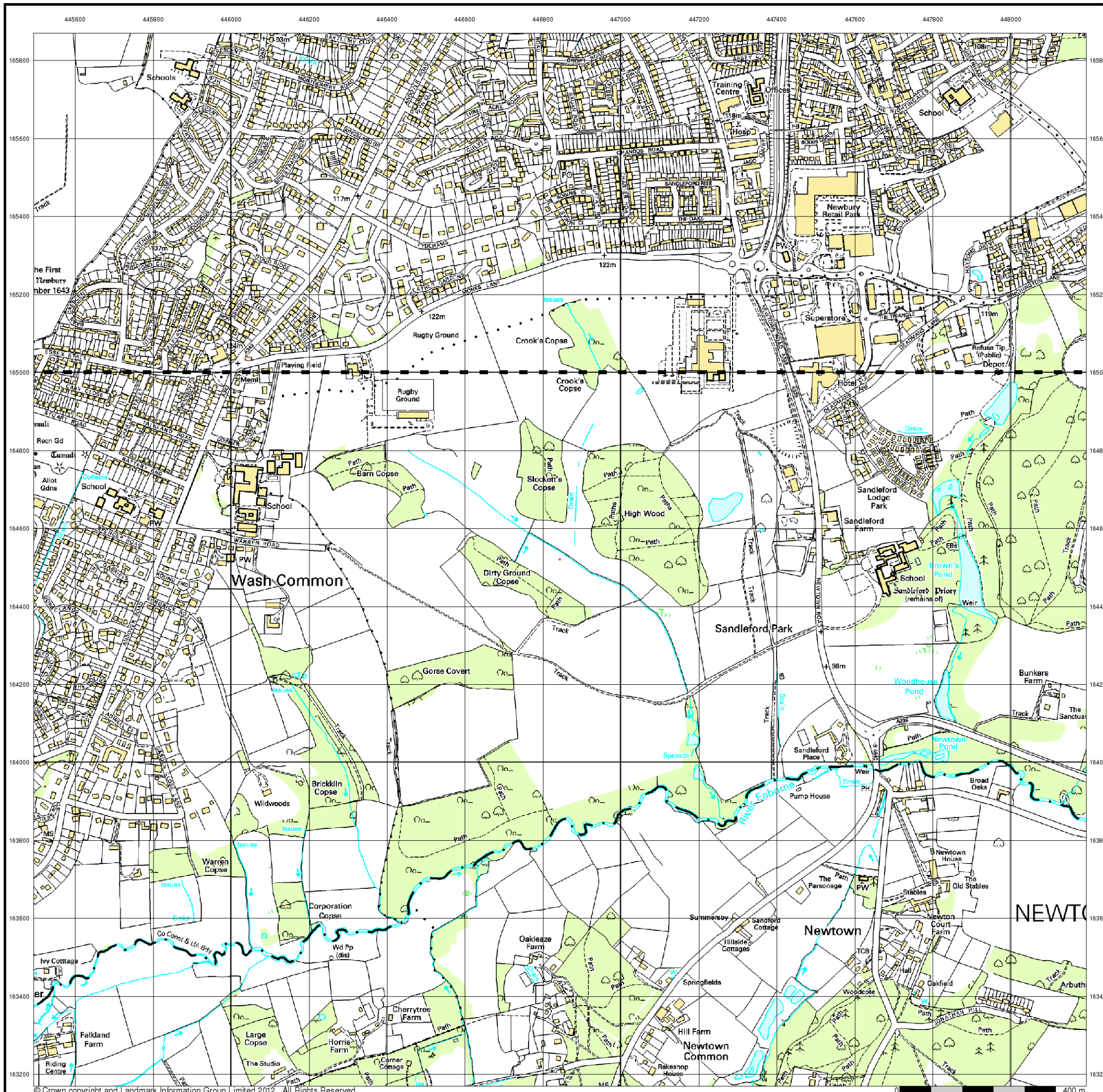


### Order Details

Order Number:	40225072_1_1
Customer Ref:	9100
National Grid Reference:	446840, 164520
Slice:	A
Site Area (Ha):	0.01
Search Buffer (m):	1000

### Site Details

Sandleford Park, Newtown, NEWBURY, Berkshire





**Plate 1: Painting of 1744 by Edward Haytley (reproduced in *Country Life*, Feb 3<sup>rd</sup> 2010)**



**Plate 2: Park Cottage, Warren Road, on approach to track leading into application site from the west**



**Plate 3: Warren Lodge, Warren Road (Grade II listed)**



**Plate 4: Dirt track off Warren Road leading to application site**



**Plate 5: Farm track running across arable field in western part of application site;  
Gorse Covert to right**



**Plate 6: Views of floodlit rugby pitch are visible through gap between Barn Copse and  
Dirty Ground Copse**