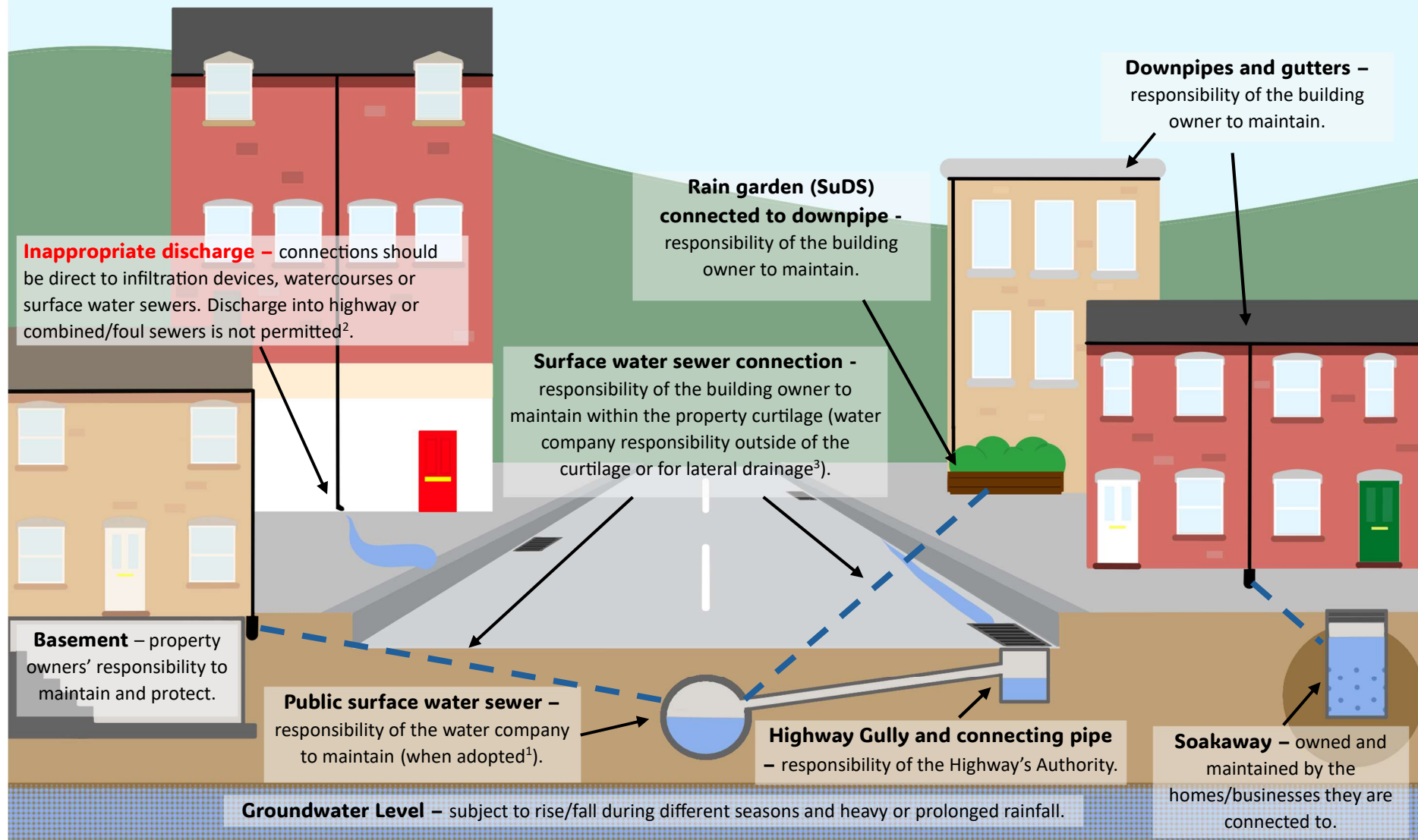


Examples of surface water drainage in urbanised areas



¹Some areas within West Berkshire do not have public surface water sewer systems. In these areas most property drainage will discharge to watercourses, or soakaways and the highway will have its own dedicated surface water drainage network.

²There are a considerable number of cases in West Berkshire where properties have inappropriate drainage. These cases cannot be proactively policed; however, we do encourage residents when made aware of the issue to take appropriate action.

³For more information please see Thames Water advice here: <https://www.thameswater.co.uk/help/water-and-waste-help/sewer-flooding/sewer-pipe-responsibility>